

State of Wyoming Corner Record

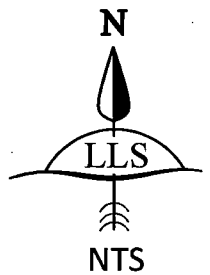
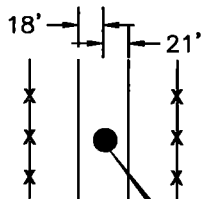
(In compliance with the **CORNER PERPETUATION AND FILING ACT**, Wyoming Statutes, 1997 Section 33-29-140 et. seq., and the Rules and Regulations of the Board of Professional Engineers and Professional Land Surveyors)

Record of original survey and citation of source of historical information (if corner is lost or obliterated). Description of corner monumentation evidence found and/or monument and accessories established to perpetuate the location of this corner. Sketch of relative location of monument, accessories, and reference points with course and distance to adjacent corner(s) (if determined in this survey).

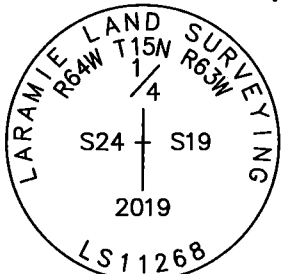
Original Record: (John B. Thomas - 1870) Set Granite Boulder 16x7x6 for 1/4 Sec. Cor.

Evidence Found: No evidence of original corner.

Perpetuation: At the single proportionate position, I set a 2 1/2" aluminum cap, marked as shown below. Cap is set 0.25' below gravel surfaced road and is situated as shown below.

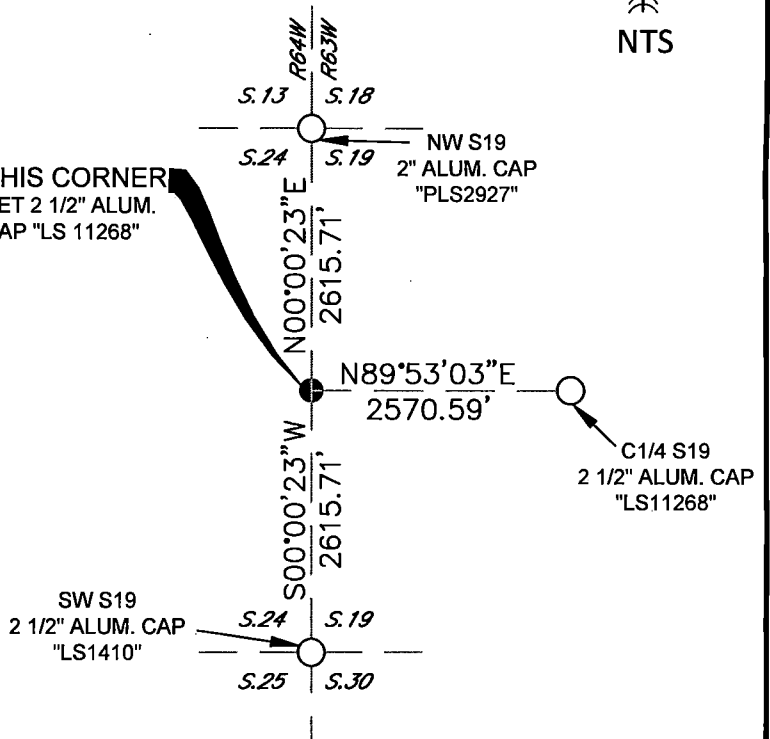


Monument Inscription



2 1/2 INCH DIAMETER
ALUMINUM CAP

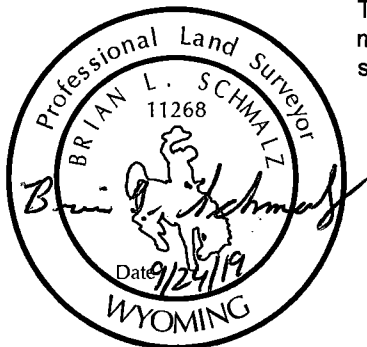
THIS CORNER
SET 2 1/2" ALUM.
CAP "LS 11268"



Date of Field Work: 09-16-2019 Office Reference: Book M-1 Pg 8

Cross Index Plat

6	5	4	3	2	1
7	8	9	10	11	12
18	17	16	15	14	13
19	20	21	22	23	24
30	29	28	27	26	25
31	32	33	34	35	36



BRIAN L. SCHMALZ
PLS 11268

This corner record was prepared by me or under my direction and supervision.



(307) 460-0801
LARAMIE, WY

(720) 263-0289
BRIGHTON, CO



RECP #: 762386
RECORDED 9/26/2019 AT 1:24 PM BK# 2640 PG# 221
Debra K. Lee, CLERK OF LARAMIE COUNTY, WY PAGE 1 OF 1

Corner Name E1/4 W1/4 Sections 24 15 64 T 15 N, R 63 W, 6th P.M. County.: LARAMIE Cross-Index No.: P-1